



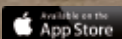
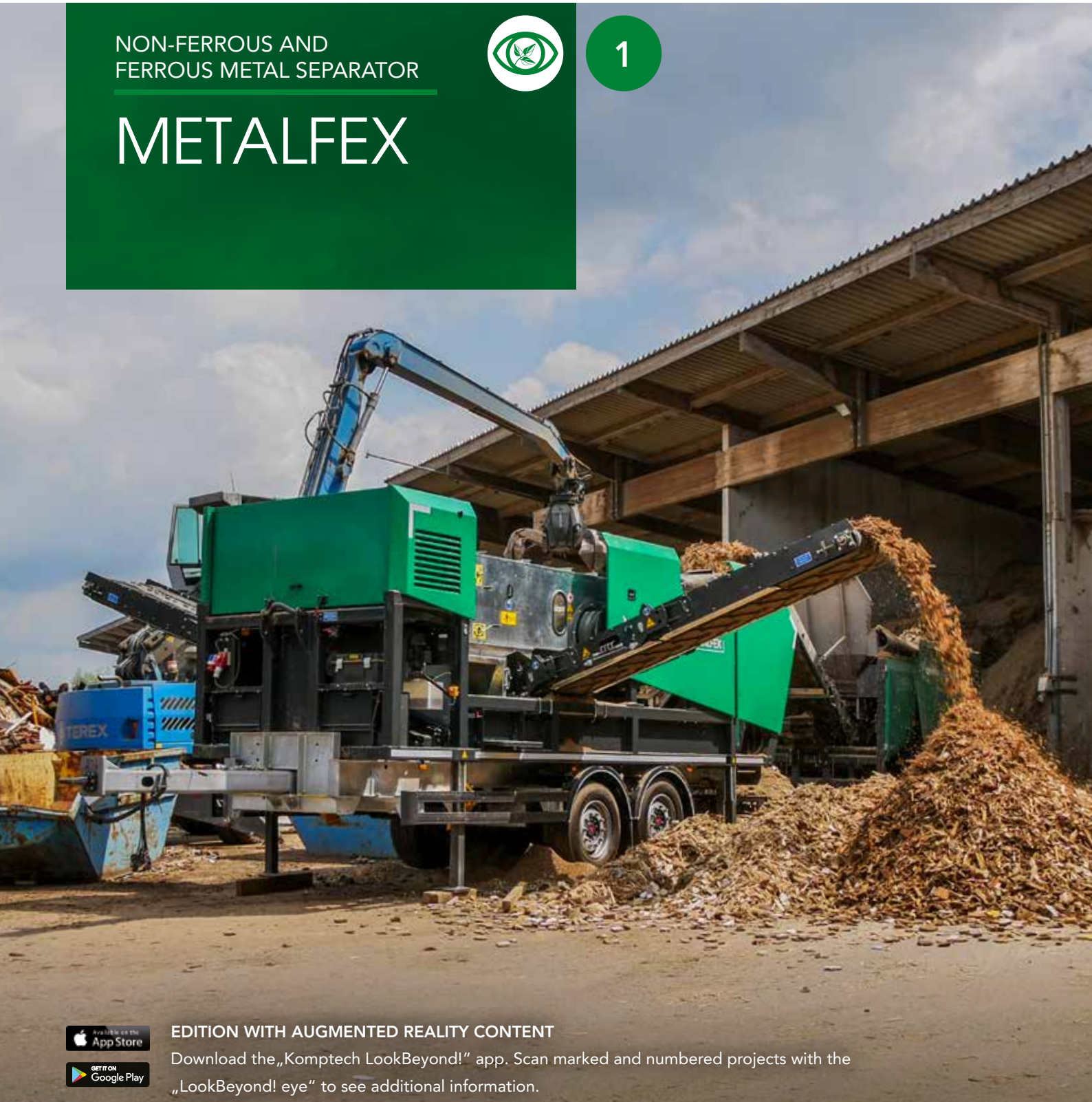
**KOMPTECH**  
TECHNOLOGY FOR A BETTER ENVIRONMENT

NON-FERROUS AND  
FERROUS METAL SEPARATOR



1

# METALFEX



EDITION WITH AUGMENTED REALITY CONTENT



Download the „Komptech LookBeyond!“ app. Scan marked and numbered projects with the „LookBeyond! eye“ to see additional information.



APPLICATION

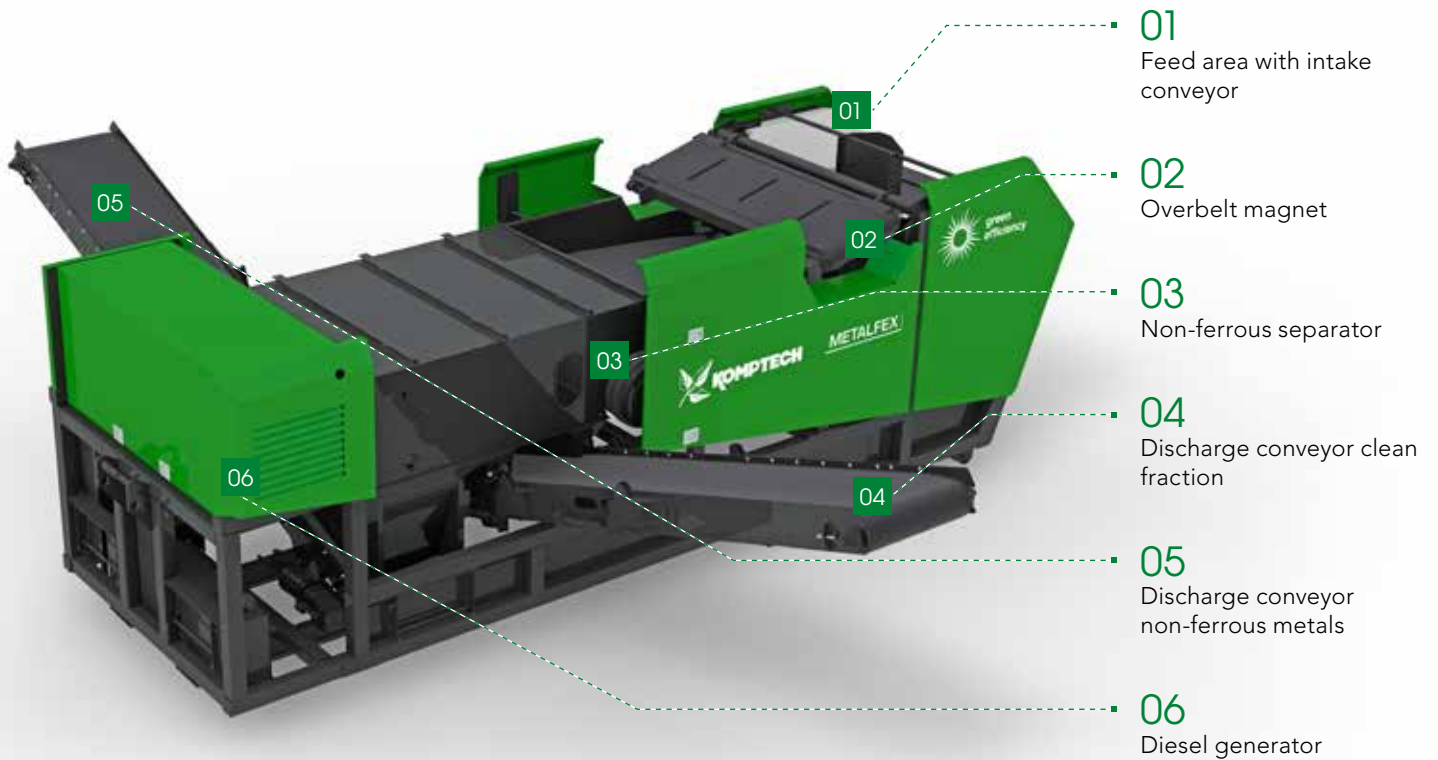
# METALFEX IN OPERATION

## HIGHLIGHTS

- » Tough construction for up to 300 mm grain materials
- » High-performance non-ferrous separator unit with 1.95 m working width
- » Optional overhead ferrous separator
- » Efficient electric drive by diesel generator or grid power
- » Flexible mobility: hook, trailer or job-site chassis

The Metalfex adds a mobile non-ferrous metal separator to the Komptech line. Designed for conveyor feed, the Metalfex has its own intake conveyor and an overhead ferrous separator upstream of non-ferrous separation. It removes non-ferrous metals using an eddy current separator with eccentric pole system, discharging the metals and the cleaned fraction by two folding conveyors to the left and right of the machine.

All components are electrically powered, from the on-board diesel generator or from grid current. The Metalfex is available in compact hook lift, easily manoeuvrable two-axle trailer or mobile site chassis versions.



- 01 Feed area with intake conveyor
- 02 Overbelt magnet
- 03 Non-ferrous separator
- 04 Discharge conveyor clean fraction
- 05 Discharge conveyor non-ferrous metals
- 06 Diesel generator



### WIDE APPLICATION AREA

The Metalfex can be used with shredded waste wood and bulk waste, industrial and commercial waste, household waste, mixed construction waste and shredder output. With its tough, powerful design, it can take input grain sizes up to 300 mm in an extremely wide range of materials.



### PRECISELY ADJUSTABLE

Non-ferrous (NF) separation is by an eddy current separator with eccentric pole system. The adjustable separating vertex allows it to be set precisely for the material at hand. The NF separator unit working width is 1.95 m.

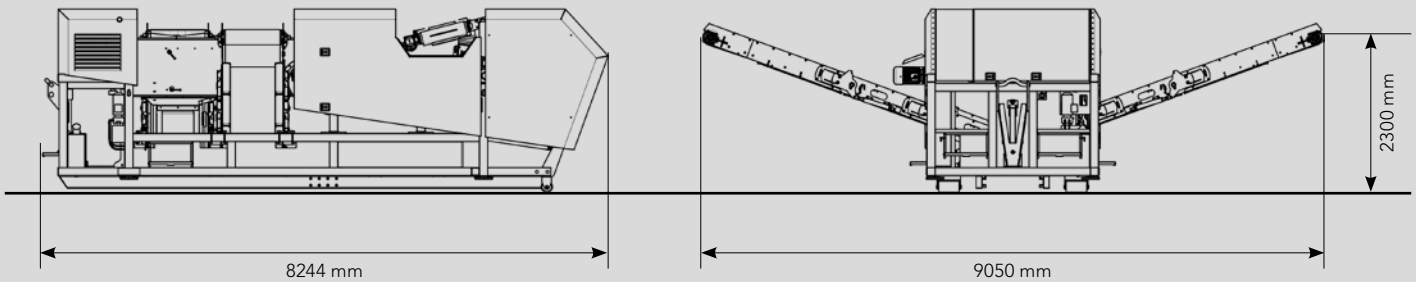


### COMFORTABLE DISCHARGE

The NF metals and cleaned fraction are output on two folding conveyors to the right and left of the machine. The 0.8 m wide belts can reach discharge heights of 2.3 to 3.15 metres, depending on the machine configuration.

## TECHNICAL SPECIFICATIONS

# METALFEX



<b>Drive</b>	
Diesel generator (kVA):	20
<b>Material feeding</b>	
Filling width (mm):	1600
Filling height (mm):	Hook: 1975 (2475 with supports) Trailer: 2975
<b>Non-ferrous separation</b>	
Type:	Eddy current separator, type Eccentric pole system
Working width (mm):	1950
<b>Ferrous separation</b>	
Type:	Over belt magnet, type Neodym
Belt width (mm):	600
<b>Material discharge</b>	
Max. discharge height non-ferrous fraction (mm):	Hook: 2300 (2800 with supports) Trailer: 3155
Max. discharge height clean fraction (mm):	Hook: 2300 (2800 with supports) Trailer: 3155
<b>Dimensions</b>	
Transport dimensions L x W x H (mm):	Hook: 8185 x 2550 x 2600 Trailer: 10510 x 2550 x 3455
Working dimensions L x W x H (mm)	Hook: 8244 x 9050 x 2600 Trailer: 10510 x 9050 x 3455
Weight (t) (dependent on equipment):	Hook: ~ 11.5 Trailer: ~ 15
<b>Throughput</b> (dependent on material)	
Throughput performance (m <sup>3</sup> /h):	up to 160

Komptech GmbH  
 Kühau 37, A-8130 Frohnleiten, Austria  
 [t] +43 3126 505 - 0  
 [f] +43 3126 505 - 505  
 [e] info@komptech.com

[www.komptech.com](http://www.komptech.com)