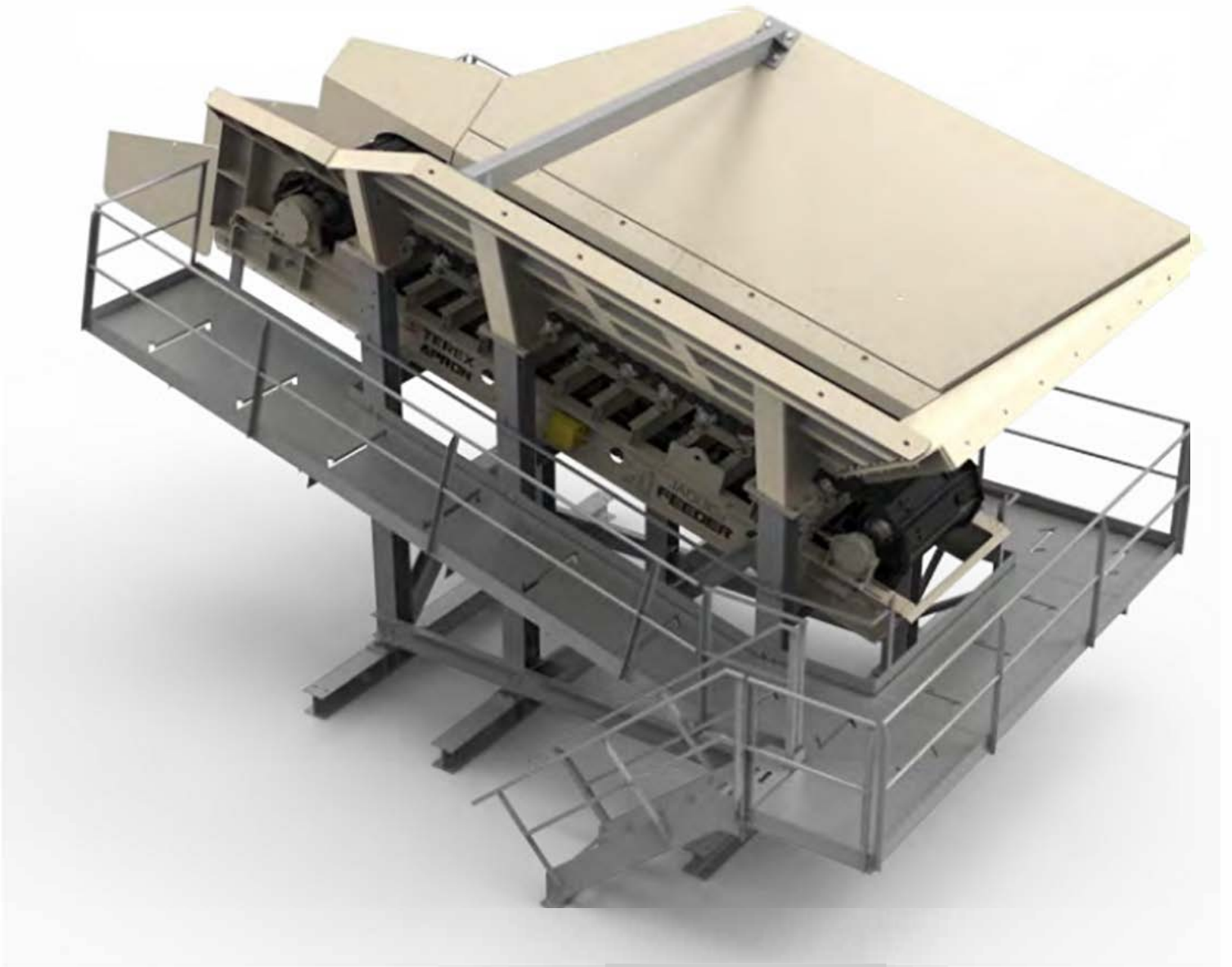




**TEREX**®



**MPS** MINERALS  
PROCESSING  
SYSTEMS



**UQUIP**

## Table of Contents

<b>Project Outline</b>	<b>3</b>
<b>Equipment</b>	<b>4</b>
Item 1: D3 Apron Feeder Module	
Item 2: MI5049 Impactor Station	
Item 3: MSH6203 Screen Station	
Item 4: Set of Conveyors	
Item 5: Magnet Station	
<b>Factory of Manufacture</b>	<b>8</b>
<b>Scope Schedule</b>	<b>9</b>



## Equipment

### D3 APRON FEEDER MODULE



#### D3 APRON FEEDER MODULE

- Modular Structure
- 3 piece sloping side hopper
- 14.66m<sup>3</sup> struck capacity
- 15° inclination
- Walkway on both sides
- Galvanised structure, painted apron feeder & chutes
- Safety guards
- Partially factory preassembled
- Complies with Australian Standards

#### ELECTRICS

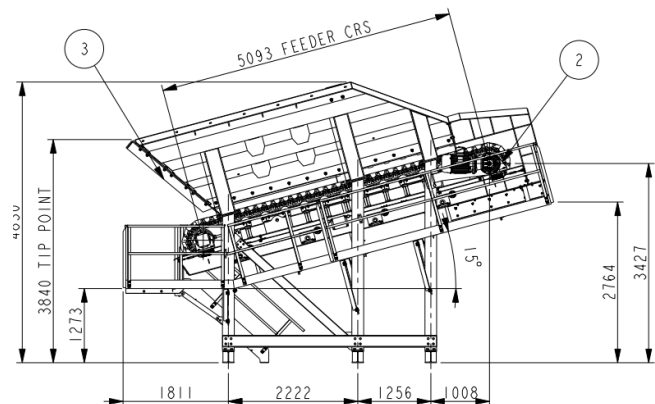
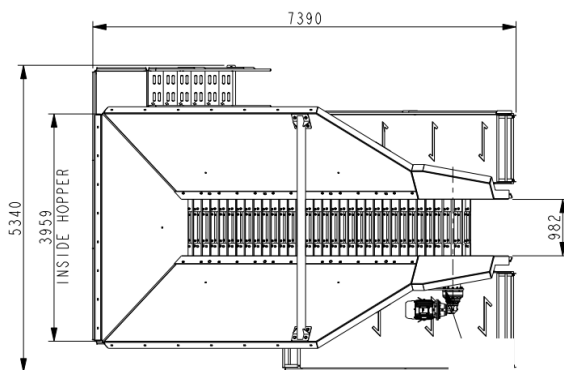
- Operated from MI5049 Primary Station
- Interlocked with other Terex modules
- Pull wire switches
- Zero speed sensor

#### D3 APRON FEEDER

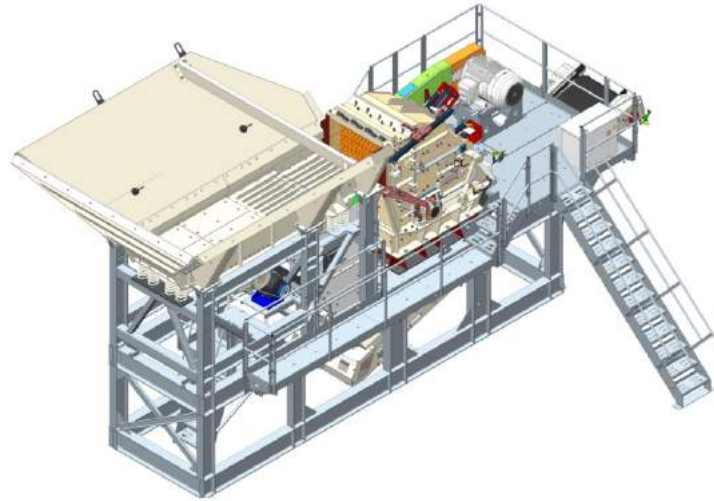
- D3 1050mm wide x 5100mm long centers
- Suitable for Variable Speed Drive Operation
- 15kW gearbox and motor
- 19mm thick pans
- Segmental sprockets
- Bolted bump rail
- Carry roller packer for maintenance access
- Hydraulic take-up

#### OPTIONS EXCLUDED

- Cable tray & Cables
- Automatic grease lubrication
- Discharge shear gate
- Local controls



## MI5049 Primary Station



### PRIMARY STATION

- Modular Structure
- MI5049 Impactor
- 4.3m x 1.06m Vibrating Grizzly Feeder
- Twin replaceable stepped 1.06m grizzly cartridge
- Crusher fines bypass
- Discharge Conveyor
- Electrics
- Galvanised structure, painted hopper

### PRODUCT CONVEYOR

- 1000mm x 6000mm belt with bolted lined feed chute
- Upgraded 22kW motor & gearbox
- Impact bars in loading chute



### OPTIONAL JIB CRANE

- 500kg rated lift
- Nominal 6m lift, 2.4m radius
- Ground mounted & chain block operated
- Option to upgrade from hoist chain block to motorised drive
- Anchored to concrete floor

### TI5049

- Horizontal Shaft Impactor HSI
- Feed Opening 270 x 994mm
- Maximum feed size 250 x 600 x 1000mm
- Rotor Diameter & Width 1270mm x 1240mm
- Hydraulic Push Button Apron Adjust
- Installed power 225kW
- Mass 15T



### ELECTRICS

- Automatic plant sequenced plant start, stop & fault
- Adjustable apron feeder plant feed control
- Motor starters for MI5049 & connected conveyors
- Preprogrammed PLC
- Interlocked with other Terex supply
- Cables partially prewired
- Total Power approx. 320kW
- IP54
- Complies with Australian Standards

### OPTIONS EXCLUDED

- Grinding Path



**MSH6203 SCREEN STATION**

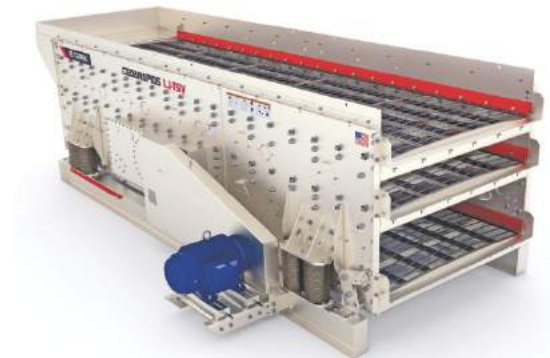
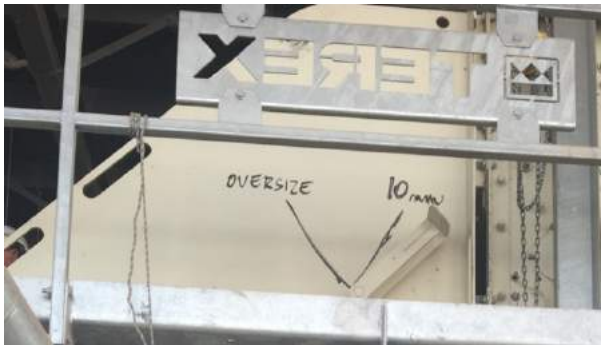


**SIZING SCREEN STATION**

- Modular Structure
- El-Jay Cedarapids TSV6203 Screen
- Roll away product chutes
- Crusher balancing \ bypass flop gate
- Product Conveyor
- Galvanised structure, painted screen & chutes
- Partially preassembled

**TSV6203**

- 1.83m x 6.1m (6' x 20') 3 deck screen
- Oval motion
- Adjustable stroke, speed and attack, 6-7G's
- Suitable for cross tension screen media
- Low maintenance surge damper



**MECHANICAL OPTIONS**

- Dust Cover
- Wire cross tension screen media

**ELECTRICS**

- Preprogrammed PLC
- Interlocked with other Terex modules
- Motor starters for screen module & connected conveyors
- Module cables partially prewired
- Auto start-up & shut down sequence
- Total Power approx. 90kW
- Complies with Australian Standards
- Modes: Maintenance, Auto & Remote Auto

**OPTIONS EXCLUDED**

- Cable Tray
- Cross member protection



## CONVEYORS



### CONVEYORS ALL

- Modular Galvanised Structure
- Guards to Australian Standards
- Gearbox and motor
- Partially preassembled
- Fixed supports
- EP400/3 4+2 belt (except CV1)
- Screw take-up
- 89mm rollers with 20mm shaft (except CV1 & 10)
- Single set tracking rollers (except CV5 with twin)
- Transfer chutes – refer drawing 979525
- One weightometer
- Rotation Monitor
- Pull wire switch

### ELECTRICS

- Powered & interlocked by Terex modules which monitor
  - Instruments, interlocks and provide motor starters
  - Auto Start-up & Shut Down Sequence
- Cable Ladder supports

### OPTIONAL EXTRAS

- Upgrade CV1 to 32.66m length 6 chute 4 man picking station

### OPTIONS EXCLUDED

- Lights, Belt Drift Switch, Primary Scraper, Metal Detector
- Walkway on CV4,6,7,9,10
- Motor & Instrument Cables

### CV1 – 28.66m x 1200mm

- Impact Bar in loading chute
- 108mm rollers with 20mm shaft
- 19° trough
- 800mm maintenance walkway on both sides, around head drum
- One set of stairs
- EP400/3 6+2 belt
- Picking station - 2 man 4 reject chutes.
- Picking station solid floor, less handrails

### CV3 – 18.5m x 800mm &

### CV5 – 33m x 650mm

- 800mm walkway on one side & arounds head drum,
- One set of stairs

### CV4 - 3.33m x 650mm

### CV6 - 10m x 650mm

### CV7 - 10m x 650mm

### CV9 - 13.5m x 650mm

- Impact Rollers

**SELF CLEANING MAGNET**

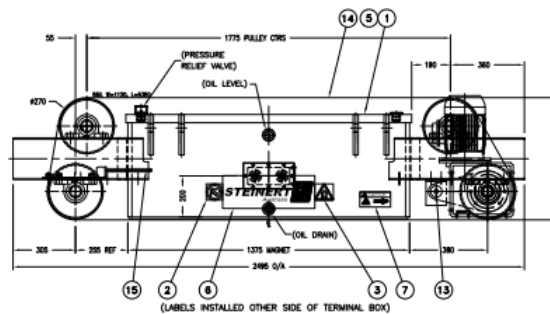
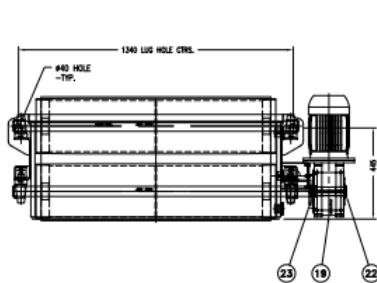
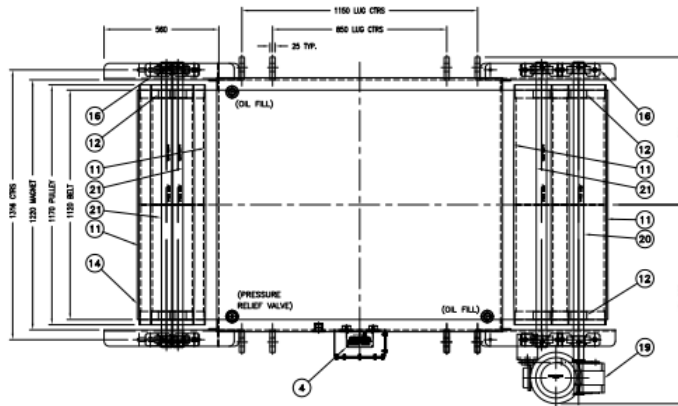


**MAGNET**

- 8.1kW electromechanical magnet with 4kW self-cleaning drive
- Magnet make: Steinert (or equivalent)
- Transformer rectifier
- 3.17T Magnet
- 400L Oil

**MAGNET STRUCTURE**

- Chain & hook magnet supports & adjustment
- Galvanised support structure
- Reject chute to CV10 - ferrous and non-ferrous design
- Plant conveyor & electrical updates
- Local Central Manual Grease





## Scope Schedule

DESCRIPTION	SCOPE OF WORK			
	BY	BY	BY	BY
	Terex	Customer	Excluded	Option
Plant layout design, arrangement and load drawings	✓			
Foundation location drawing	✓			
Documentation for site assembly and transport	✓			
Modular crushing plant	✓			
Operation and maintenance & parts manuals	✓			
All necessary civil, foundations & earthworks		✓		
Mechanical onsite installation		✓		
Special non Terex standard paint systems			✓	
Spare parts			✓	
First fill lubricants		✓		
ELECTRICAL DESCRIPTION	ELECTRICAL SCOPE OF WORK			
	BY	BY	BY	BY
	Terex	Customer	Excluded	Option
Electrical motors, starters, interlocks	✓			
Module motor & instrument cables	✓			
Cables between modules & conveyors		✓		
Cable tray on modules			✓	
Cables tray on conveyors	✓			
Power distribution to each module		✓		
All necessary civil, foundations & earthworks		✓		
Electrical onsite Installation		✓		
Central Control Room \ Central MCC			✓	

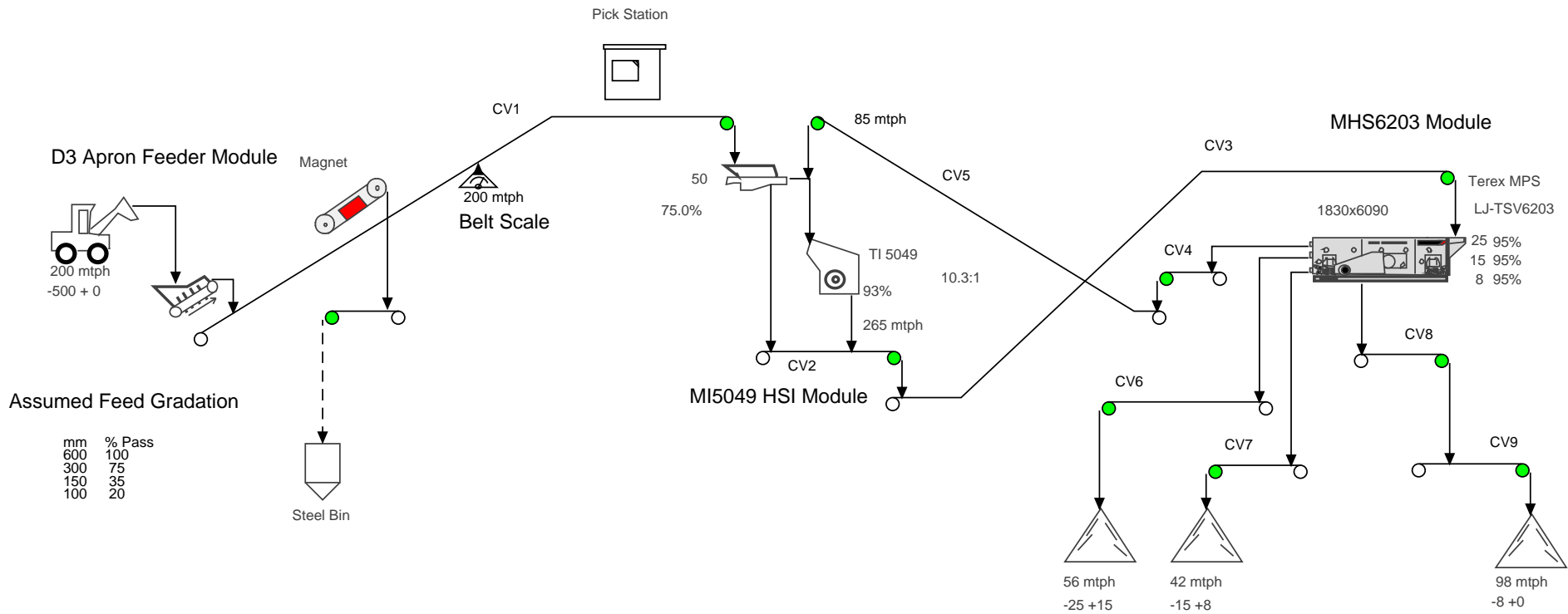
# ADDITIONAL INFORMATION



## CONTACT

Cees Duijn +31 6 53 31 43 09 | Rik Schram +31 6 46 81 93 87

[WWW.UQUIP.EU](http://WWW.UQUIP.EU) | [INFO@UQUIP.EU](mailto:INFO@UQUIP.EU)

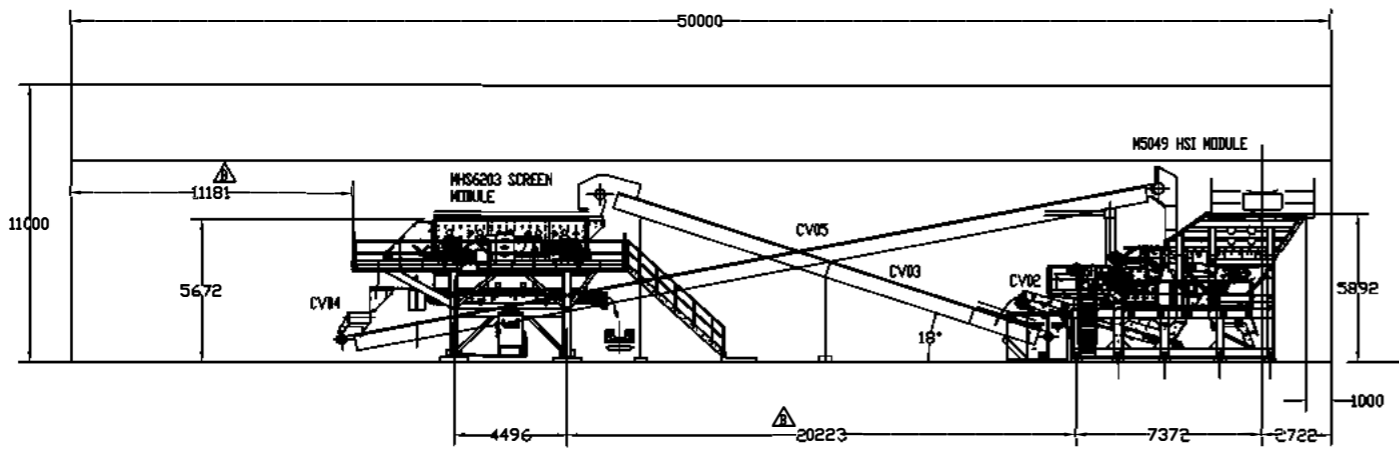


Calculation results may differ due to variations in operating conditions and application of crushing and screening equipment. This information does not constitute an express or implied warranty, but shows results of calculations based on information provided by customers or equipment manufacturers. Use this information for estimating purposes only.

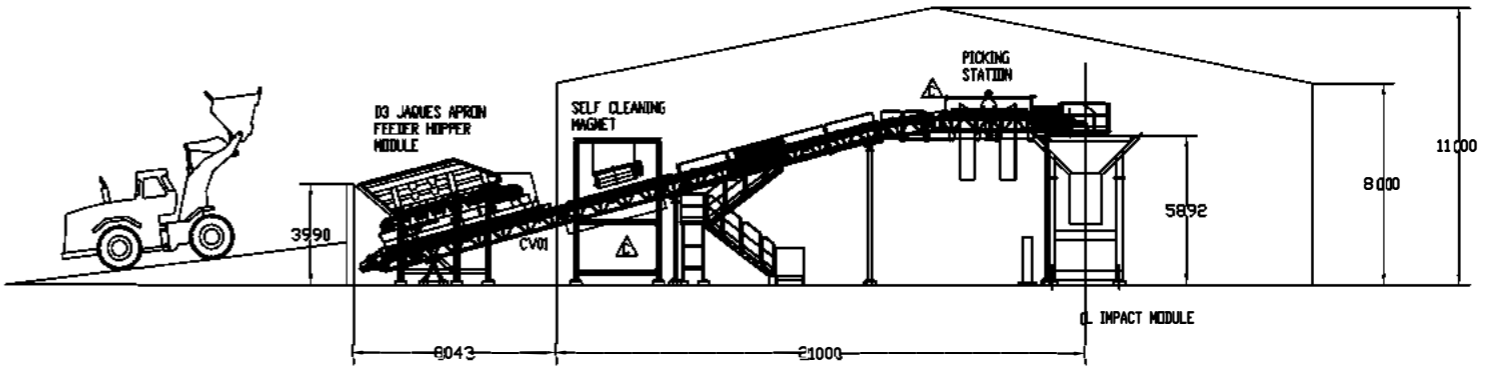
All calculations performed by AggFlow. <http://www.AggFlow.com>



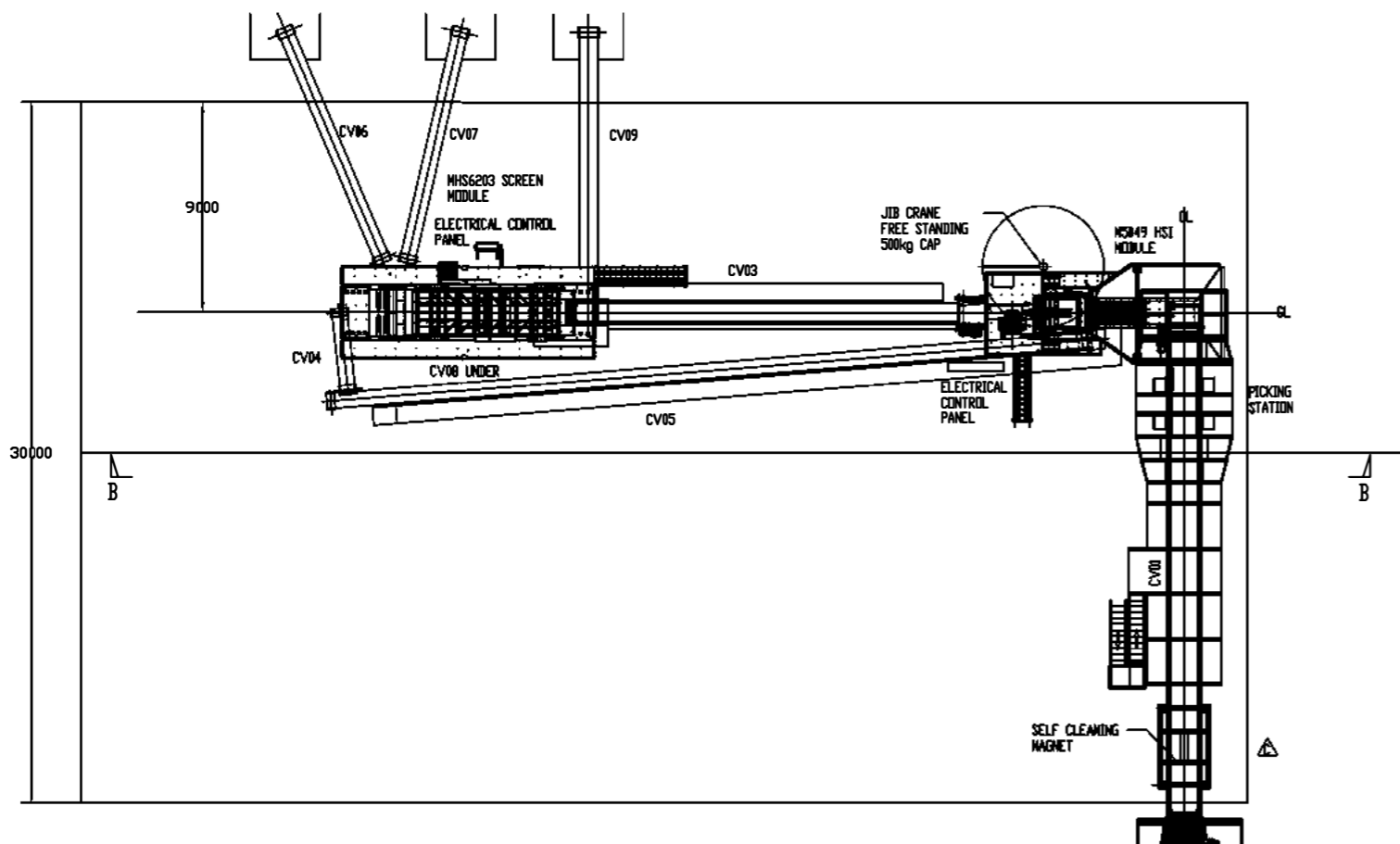
DO NOT SCALE THIS DRAWING - IF IN DOUBT ASK.



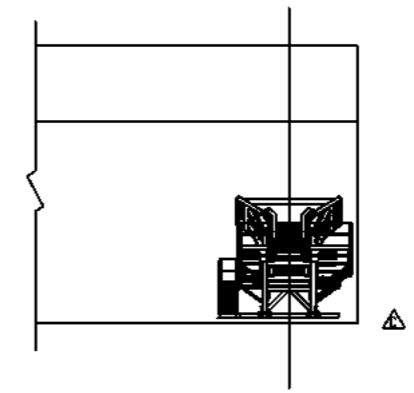
ELEVATION B-B. IMPACT MODULE TO SCREEN MODULE



ELEVATION C-C. D3 APRON FEEDER MODULE TO PICKING STATION



PLAN VIEW



ELEVATION A-A. D3 APRON FEEDER MODULE

CONVEYOR	WIDTH	LENGTH	LIFT	TONNES/HR
CV01	1200	28500	3650	225
CV02	TEREX 1000	6250	1785	225
CV03	800	18500	5650	311
CV04	650	3250	800	86
CV05	650	33000	6000	86
CV06	650	10000	3500	112
CV07	650	10000	3500	49
CV08	TEREX 1200	6700	35	63
CV09	650	13500	3500	63



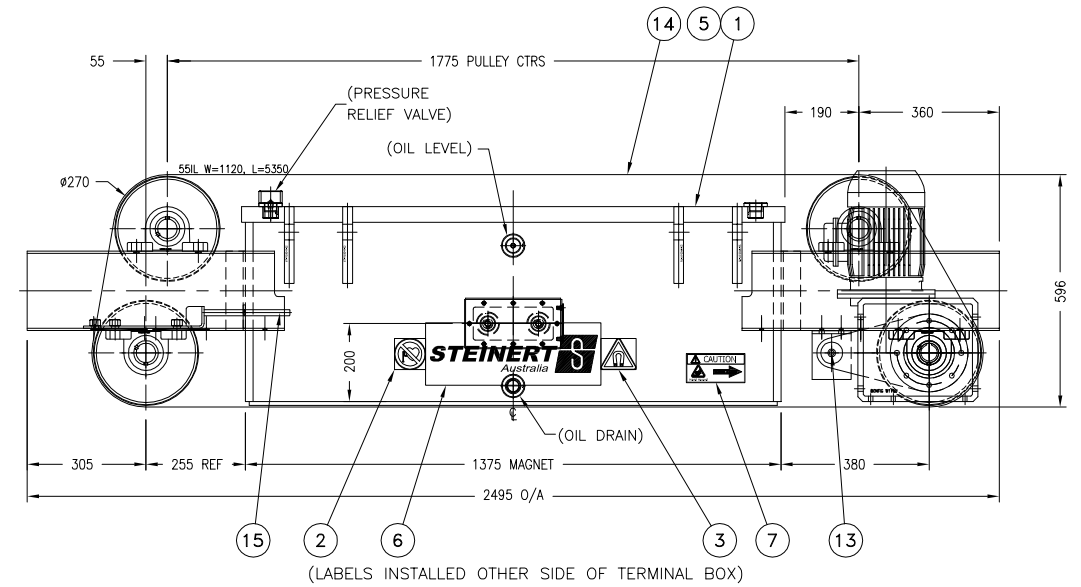
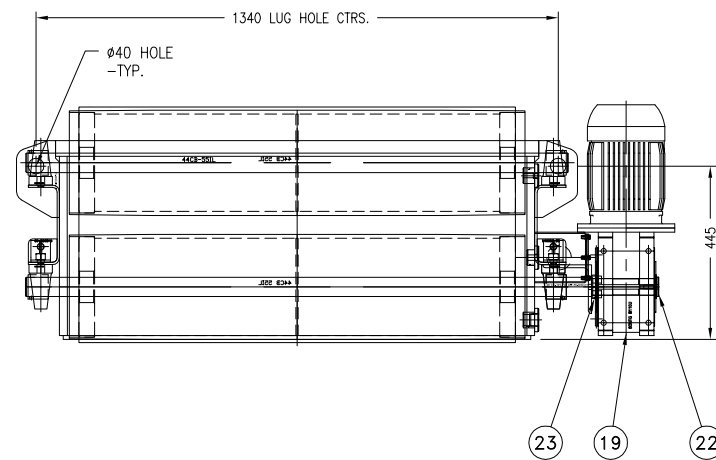
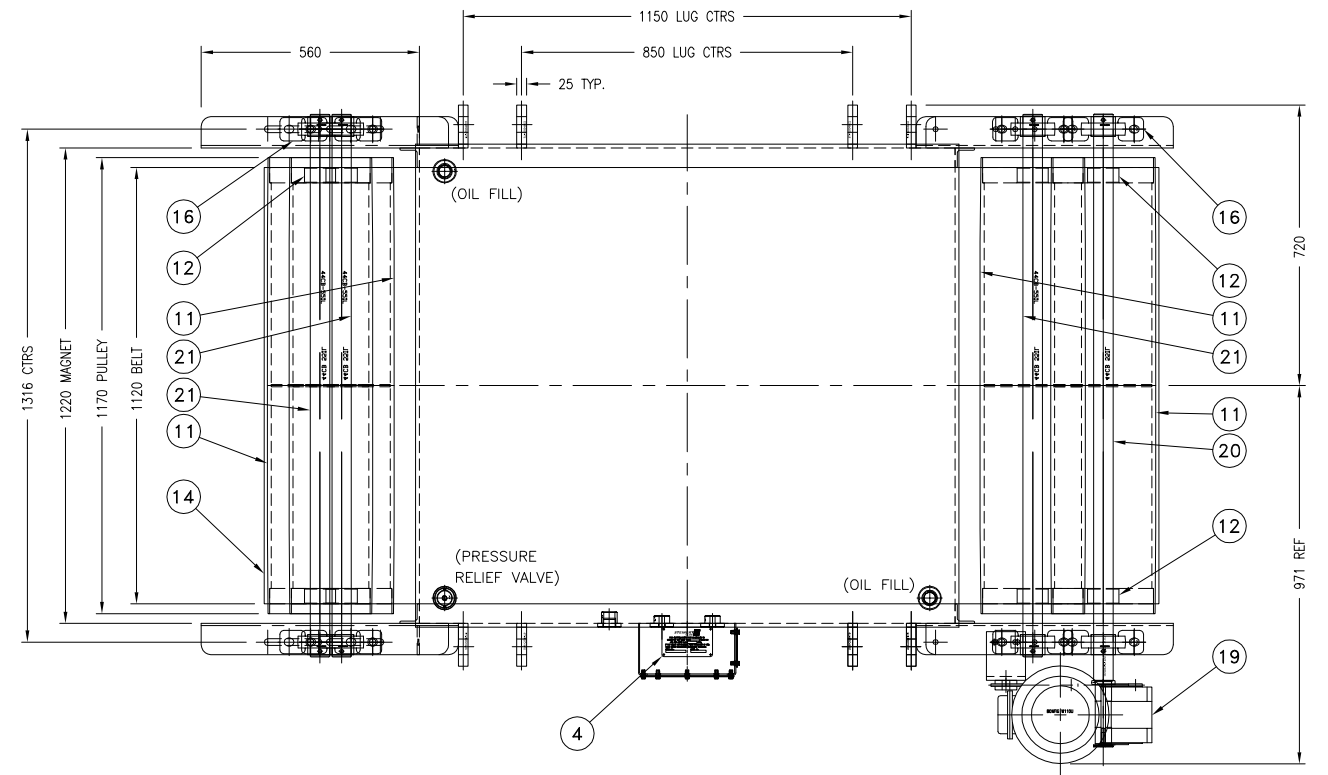
ISSUE	NO.	DESCRIPTION OF CHANGE	BY	DATE	REVISION	APPROVED	DATE	REFERENCE DRAWING
C		REMOVED CV10, HANDRAILS IN PICKING STATION	SSL					
B		MOVED BUILDING	MJA					
B		SHORTENED PLANT BY 3M	MJA					
A		CV10 ADDED ELECTRICAL CONTROL PANELS	R.L.					
A		ADDED	R.L.					

QTY.	PART NO.	REVISION	WHERE USED	TEST MASS (kg each)
<p>RELEASED: Below otherwise specified -                  All surfaces finish to be as per drawing unless otherwise specified.                  All welding to be as per drawing unless otherwise specified.                  All materials to be as per drawing unless otherwise specified.                  All dimensions to be as per drawing unless otherwise specified.                  All tolerances to be as per drawing unless otherwise specified.                  All materials to be as per drawing unless otherwise specified.                  All dimensions to be as per drawing unless otherwise specified.                  All tolerances to be as per drawing unless otherwise specified.</p>				
<p>SCALE: 1:150                  DRAWN / DATE: R.L. 19-12-17                  CHECKED / DATE: [blank]                  DESIGN APPROVED / DATE: [blank]                  RELEASE AUTHORIZED / DATE: [blank]</p>		<p>NEW BLDG JOB                  TEREX   JAQUES                  150+TPH MODULAR CRUSHING AND SCREENING PLANT                  979525</p>		



55-SC MAGNET	
WEIGHT Kg	3175
VOLTS D.C.	115
AMPS	70
WATTS	8077
OIL	400 LTR.

PAINT SPECIFICATION		
ITEM	SPECIFICATION	COLOR
MAGNET	STEINERT AUSTRALIA STANDARD	MELON YELLOW ( RAL1028 )



23	M10076-01			DRIVE SHAFT - COLLAR	1	
22	M10070-01			DRIVE SHAFT - END CAP	1	
21	M10082-04			IDLER SHAFT - 55IL	3	
20	M10083-05			DRIVE SHAFT - 55IL	1	
19	P20002			BONFIG GBOX W110U, MTR-WEG 3.0KW 4 POLE 415V	1	
18						
17						
16	P00028			PILLOW BLOCK - STD.	8	
15	A10035-01			TAKE-UP UNIT - 22 TO 55 SC	2	
14	M10059-01			BELT-55IL 1120 WIDE x 5350 LG.	1	
13	P20059			REACTION ARM - BONFIG W110U	1	
12	P00117			TOLLOCK CONE CLAMP - TLK200 #50	8	
11	A10039-04			PULLEY - 55IL	4	
10						
9						
8						
7	P60053/P60054		VINYL	BELT DIRECTION LH/R/H LABELS	2	
6	P60044		VINYL	STEINERT AUST. ADH. LABEL	2	
6	P60044		VINYL	STEINERT AUST. ADH. LABEL	2	
5	P60012		OIL	INHIBITED TRANSFORMER OIL	400L	
4	P60008		S/S	MAGNET I.D. LABEL	1	
3	P60006		VINYL	MAGNETIC FIELD WARNING LABEL	2	
2	P60005		VINYL	PACEMAKER WARNING LABEL	2	
1	A10004-02-IL	MAG-A10004-02-IL		WELDMENT 55-IL1PC PILLOW BLOCK	1	
ITEM	PART. No.	DWG. No.	MAT'L	DESCRIPTION	QTY.	REV.

DESCRIPTION	BY	DATE
ISSUED FOR APPROVAL		
DRAWING REVISION		

UNTOLERANCED DIMENSIONS		
DIMENSION	DIAMETER	LENGTH
0-250mm	± 0.25mm	± 0.5mm
251-750mm	± 0.50mm	± 1.0mm
OVER 750mm	± 0.75mm	± 1.5mm

**STEINERT Australia** 14 LONGSTAFF ROAD BAYSWATER 3153 VIC. AUSTRALIA  
 TEL : (03) 8720 0800 FAX : (03) 8720 0888  
 EMAIL : sales@steinert.com.au

**55-IL1PC SELF CLEAN c/w PILLOW BLOCK GENERAL ASSEMBLY**  
 PART No. MAGZ-55-IL1PC

DRAWN	RDA/EVB	01.12.11	DO NOT SCALE	
CHECKED			IF IN DOUBT - ASK.	
APPROVED			QTY.	SCALE: 1:10
SHEET	1	OF 1		<b>A1</b>
DWG. No.	MAGZ-55-IL1PC			REV. A